

OptoMedia TRX for Industrial Networking

S-Grade / I-temp
-40°C~95°C / -40°C~85°C

Harsh Environment
Working up to 95% humidity

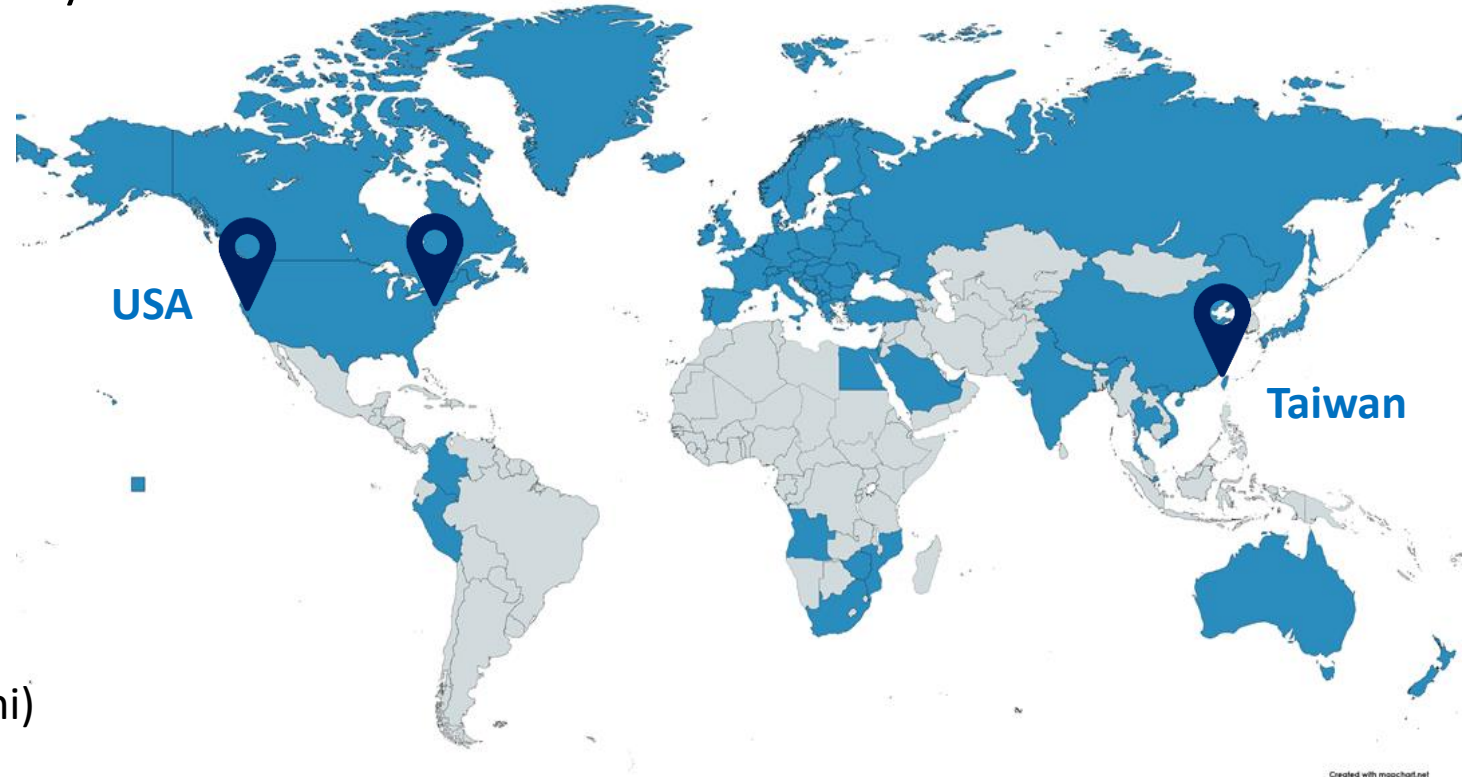
OptoMedia
Supports your integration in all Environments

Low Data Rate / Industrial IoT
312.5Kbps~155Mbps

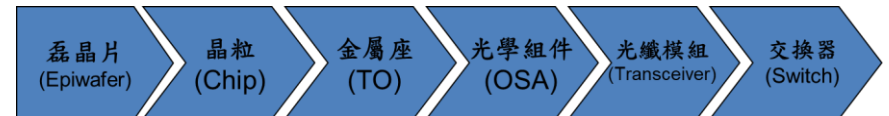
Electromagnetic Compatibility
EMI Immunity and Hi-pot Isolation

About OptoMedia

- Taiwan-based industrial solutions company
- Founded in 2006
- Main shareholders:
 - institutional investors
 - public listed companies in Taiwan
 - management team / employees
- Top 2 video SFP provider in the world
- Sales Area :
 - USA, 50%
 - Europe, 30%
 - Japan, 20% (Sony, Panasonic and Hitachi)



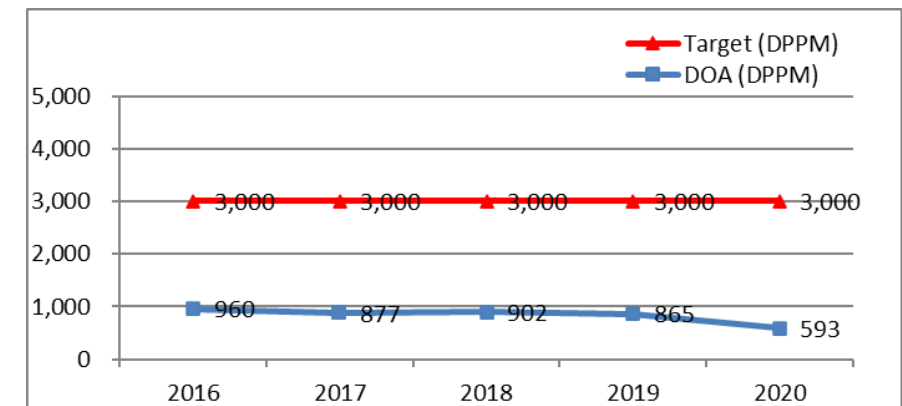
- Key component (**laser diode, photo detector**) from shareholder



Something About OptoMedia we hope you know



- Proficient in using **high frequency simulation software**, powered by
- Trade Agreements Act (**TAA**) compliant
- OptoMedia's project experience with **US Data Centers and Government Projects**
 - Worked with cloud projects with Microsoft, HP and Data Centers
 - Became one of major suppliers for **USA government** and national defense **fiber-to-the-desk** installations since 2014
 - Delivered **over 300K units** to US Government per year and most of them are **industrial grade**
 - **RMA rate is extremely low**
- OptoMedia understands Industrial Customers' challenges:
 - Environments ranging at **high temperatures**
 - High **signal interference**
 - High **reliability**
- Presence in Germany
 - **Hannover Messe @ Hannover** and **SPS IPC Drives @ Nuremburg**
 - Global leaders in **Factory Automation**



OptoMedia in Industrial Networking

Capabilities of special designs for Industrial Optical Modules :

1. 95°C modules
2. Heat dissipation
3. Lower power consumption
4. Electromagnetic compatibility (EMC) control
5. Anti-thermal noise
6. Customized housing
7. Miniaturized modules



OptoMedia in Customized Housing



4-CH BiDi Sushi Module



Customized ST Module



2-CH BiDi Module



SC SFP Module

Why OptoMedia?



**Global
Presence**

2. Working with Japanese customers for more than 10 years



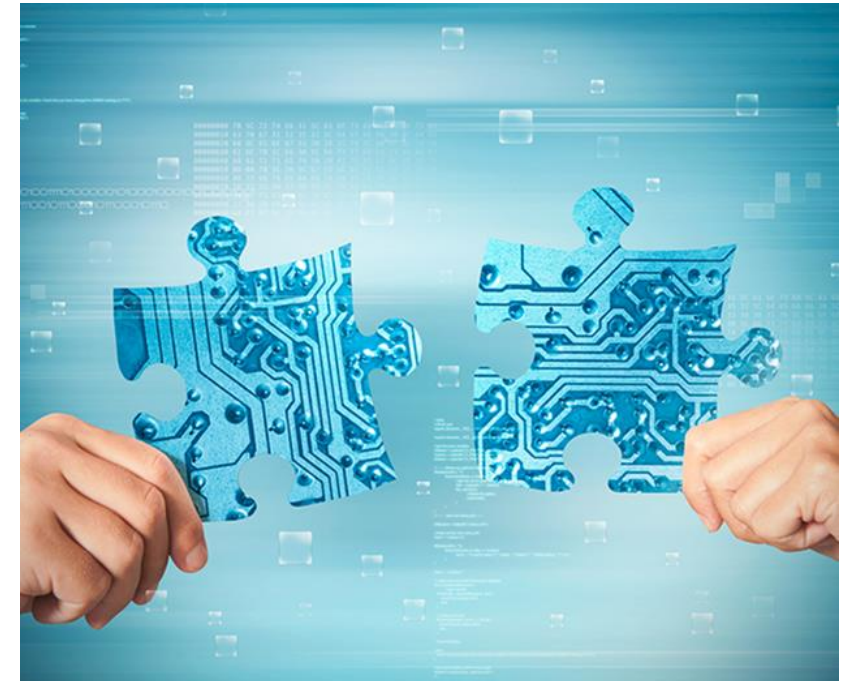
4. Local Sales and FAE support in USA

1. Manufacture mainly with local materials in Taiwan

3. Working with European customers for more than 15 years

Why OptoMedia?

5. Comprehensive supply chain with Green Policy (SONY Green Partner Certificate)
6. Highly automatic production and testing (ATS)
7. Traceability
8. Ability of high-speed signal simulation (By Ansys)
9. Proof of overall understanding about requirements and solutions from system providers
10. Design capability : Hardware 、 Software and Firmware



We Make the Fiber Link Happen

www.opto-media.com
info@opto-media.com

**POWER YOUR NETWORK TO
NEXT INDUSTRIAL LEVEL**

The Perfect Fiber Transceiver Solution



Opto
Media
Optical Communication
& Home Multimedia